



Flat 4, 8 Queen Victoria Road, Totley, Sheffield, S17 4HT



8 Queen Victoria Road

Totley

Guide Price

£180,000

GUIDE PRICE £180,000 - £190,000

Bright & Spacious Newly Renovated Apartment in Sought-After Bradway

This beautifully renovated first-floor apartment is located in the ever-popular suburb of Bradway and is offered for sale with no onward chain. It's completely turn-key ready, making it an ideal choice for anyone wanting to move straight in without needing to lift a finger.

The apartment feels light and welcoming throughout, with a dual-aspect living space that brings in plenty of natural light and enjoys lovely open views over greenery. The kitchen has been finished to a high standard with modern units, integrated appliances and a breakfast bar perfectly positioned to take in the view—ideal for a morning coffee or relaxed dining.

There are two good-sized double bedrooms, offering flexibility whether you need space for guests, working from home or simply extra room. The bathroom is fresh and modern, fitted with a clean white suite, and there's also useful storage in the hallway.

Outside, you'll find well-kept communal gardens and an allocated parking space.

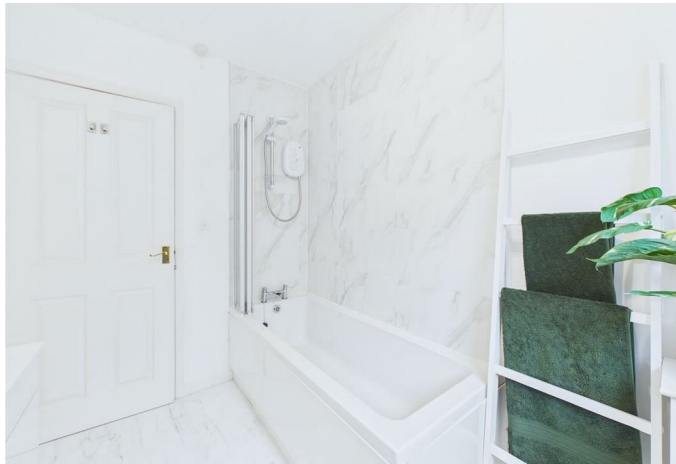
Bradway is a highly regarded suburb in south west Sheffield, popular for its easy access to green spaces, desirable schools, local amenities and excellent transport links. It also offers quick access to the stunning Peak District National Park, making it a great location for those who enjoy both convenience and the outdoors.

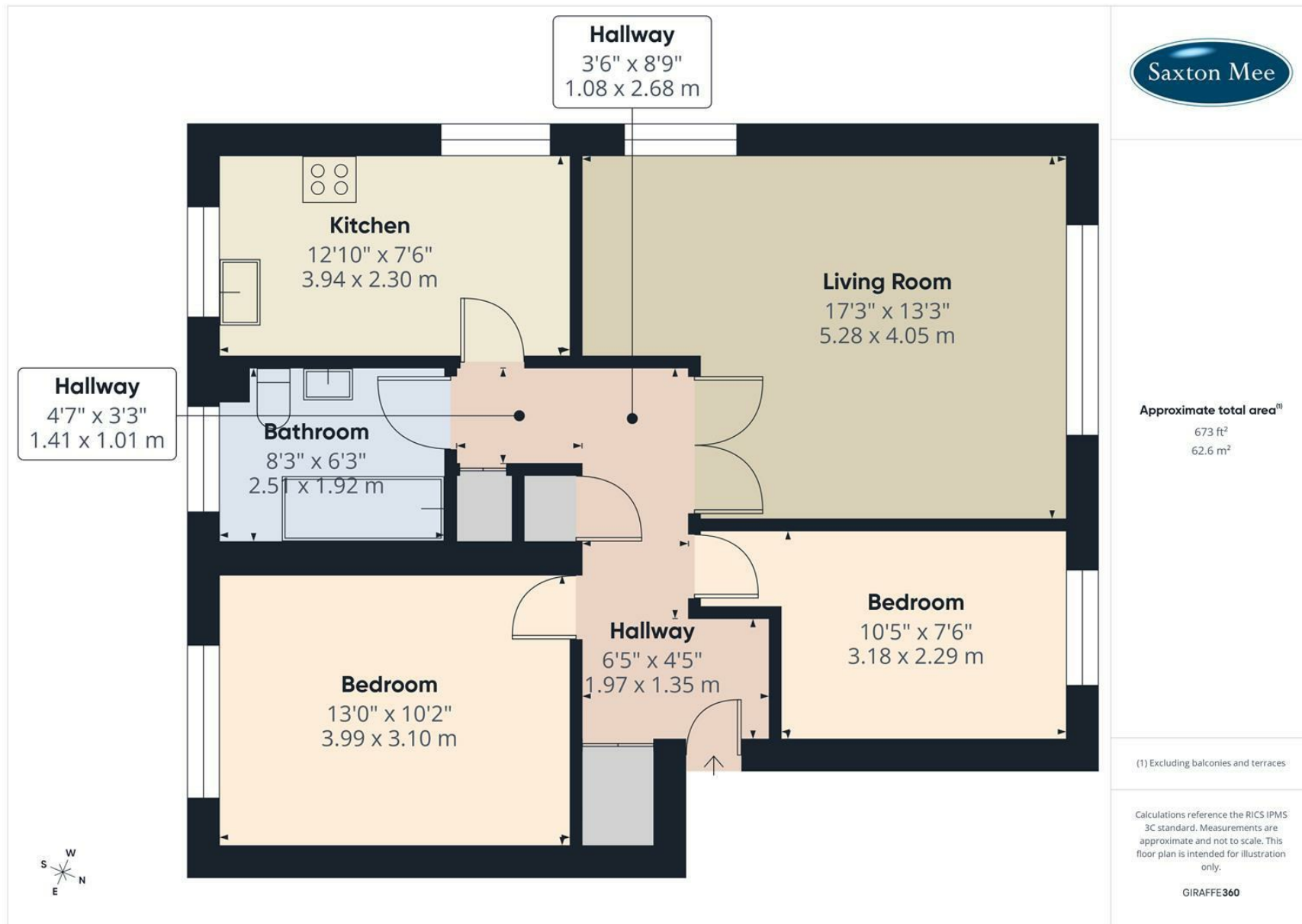
Overall, this is a bright, comfortable home in a great location, well suited to first-time buyers, downsizers or couples looking for something ready to enjoy from day one.



- Beautifully renovated first-floor apartment in sought-after Bradway, offered with no onward chain
- Turn-key ready throughout, ideal for someone not wanting to do any work
- Bright dual-aspect living space with lovely open views over greenery
- Modern fitted kitchen with integrated appliances and breakfast bar overlooking the outlook
- Two well-proportioned double bedrooms offering flexible living space
- Stylish, contemporary bathroom with clean white suite
- Well-kept communal gardens and an allocated parking space
- Popular south west Sheffield location with great schools, amenities, transport links, green spaces and easy access to the Peak District National Park







While we endeavour to make our sales particulars fair, accurate and reliable, they are only a general guide to the property and, accordingly, if there is any point, which is of particular importance to you, please contact the relevant office. The Agents have not tested any apparatus, equipment, fittings or services and so cannot verify they are in working order. The buyer is advised to obtain verification. Please note all the measurement details are approximate and should not be relied upon as exact. All plans, floor plans and maps are for guidance purposes only and are not to scale. Under no circumstances should they be relied upon as exact or for use in planning carpets and other such fixtures, fittings or furnishings. YOUR HOME IS AT RISK IF YOU DO NOT KEEP UP REPAYMENTS ON A MORTGAGE OR OTHER LOAN SECURED ON IT. 'A Life Assurance policy may be requested.' 'Written Quotations of credit terms available on request.'

Banner Cross
T: 0114 268 3241
E: bannercross@saxtonmee.co.uk
www.saxtonmee.co.uk

Hathersage
T: 01433 650009
E: hathersage@saxtonmee.co.uk

Bakewell
T: 01629 815307
E: bakewell@saxtonmee.co.uk

Matlock
T: 01629 828250
E: matlock@saxtonmee.co.uk

